

SCHOOL VISITS TO GREAT DIXTER

Great Dixter has an exciting new programme for schools which will be available from Spring 2012.



All primary school visits to Great Dixter cost £5.50 per child, which includes a full day of planned activity with the Education Officer, Catherine as well as use of the education room at Dixter Farm for lunch and as part of planned activities. As the garden is small a maximum of one class may visit in a day. Accompanying adults are free of charge.



Where you see * workshops will be run by Hastings artist Hazel Brook.

<http://www.graphicideas.co.uk/index.htm> . As well as being a visual artist, a painter and printmaker, Hazel also works in a range of mixed media including collage and drawing. She has lots of experience working with children, having worked in a Hastings nursery setting running art workshops as well as running educational programmes for children in museums and galleries.

To book a visit or discuss your group's needs with the Education Officer, please email education@greatdixter.co.uk or phone 01797 254048.

A programme of activities for Early Years Foundation Stage to Key Stage 2 is currently available. For Key stage 3 and above please contact the Education Officer who will tailor your visit.

To book a school visit to Great Dixter please email education@greatdixter.co.uk or phone Catherine on 01797 254048

Programme
Key Stage 2.

Garden detectives

Using vegetables as a starting point pupils find out about plant parts, their purpose and the ingredients and conditions that are necessary for healthy plant growth. This session includes an activity walk looking at the diversity of plants at Great Dixter, with plenty of activities and games to get young minds going, as well as a chance to plant some vegetables in our learning garden- and plant a seed to take home. This session includes and a seasonal cooking activity, where the children will be able to prepare and taste a snack using fruit or vegetables grown in the teaching garden.



National curriculum:

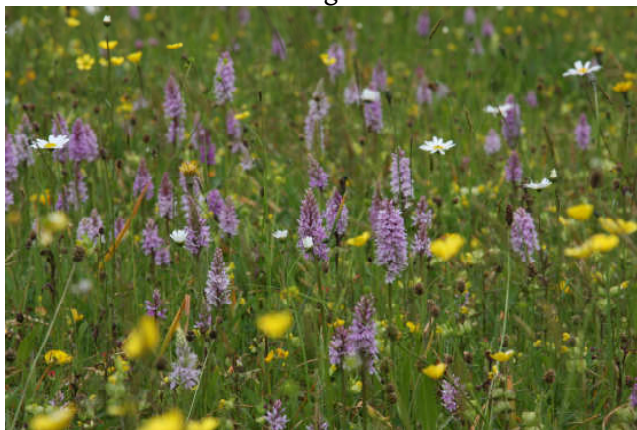
Science Sc1 (Scientific enquiry) 1a, 1b. Science Sc2 (Life processes and living things) 1b, 1c, 3a-d
Design and Technology, 1a-d, 2a-f, 3 a-c, 4ab, 5a-b

Suitable for: Year 3-4

When: April- October

Habitat explorer day.

Using the rich and diverse landscapes available at Great Dixter including our ancient coppiced woodland, dipping pond and rich biodiverse meadow, pupils will explore and compare a range of local habitats, investigating the plants and animals present. They will use keys for identification and record results, investigate food chains and make their own keys.



National curriculum:

Science Sc1 (Scientific enquiry) 2i-m, Science Sc2 (Life processes and living things) 4a-c, 5a-f

Suitable for: Years 3-6

When: April- October

To book a school visit to Great Dixter please email education@greatdixter.co.uk or phone Catherine on 01797 254048

Garden collage and print day*

The day will start with a session sketching around the garden, looking closely at insects, plant forms and birds as well as collecting other information including colours shapes, forms, movement, scale, textures scents and smells, as well as words and ideas from the garden.

The group will return to the education centre where they will use the information collected from the garden to create insects, birds and plant designs on card. The children will be encouraged to cut and rearrange the card cutouts and use natural objects to add to the piece creating a printing block. They will then use their printing block to experiment by creating prints and rubbings on a range of materials using Brusho dyes and crayons.



National Curriculum:

Art and Design, 1a-c, 2a-c, 3a-b 4a-c

English 1c-f, 2 a-f, 3, a-e, 10 a-c

Design and Technology, 1b,d, 2a-e, 3a

Suitable for: Year 2 and above

Time: Any time of year

Woodland explorer day

Our woodland explorer day will introduce children to Great Dixter's ancient coppiced woodland through a range of different practical activities. The group will have a go at firelighting, use small hand tools to create a name badge, have a chance to cook over the fire and play a whole range of sensory games.

The afternoon will consist of a shelter building session, introduced by a story to get imaginations fired up, plus some time for the children to explore the woods undirected.



National Curriculum:

Design & Technology 1a-d, 2a-e, 3a-c, 4a,b, 5b

English 2a,b, 3a,b

PSHE 1a-c

Citizenship 1a-c

Suitable for: Year 3-6

When: Any time of year

Perfect pollinators and dynamic dispersal.

Come on a journey to discover how the plants in the garden at Great Dixter make their seeds- from beautiful blooms to sneezy conifer pollen and grasses- and how seeds disperse away from their parents to have all the resources they need to germinate and survive. This outdoor activity looks at the details and methods of pollination and how seeds disperse and germinate- the lifecycle of a plant and will involve an arty afternoon looking closely at pollen



National curriculum:

Science Sc2 Life processes and living things 1b, 1c, 3a-d

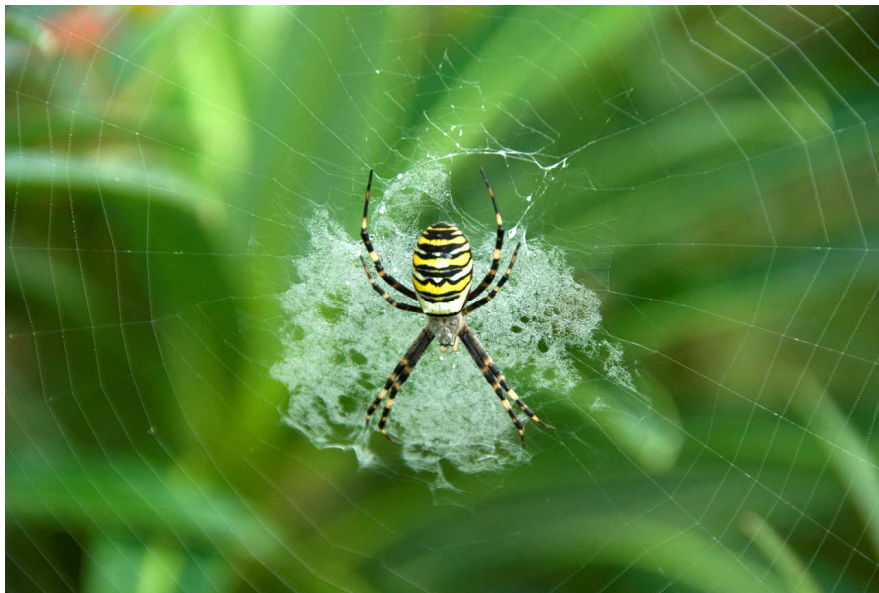
Art and Design: 1a-c, 2a-c, 5a-c

Suitable for: Year 5-6

When: April-October

Habitat experts: Interdependence and food chains.

Using the rich and diverse landscapes available at Great Dixter including our ancient coppiced woodland, dipping pond and rich biodiverse meadow, this activity looks closer at plants and animals in the environment, how they are adapted to local conditions, predator-prey adaptations and how animals and plants can be put into food chains to explain their feeding relationships.



National Curriculum:

Science Sc1 Scientific enquiry 2j-m. Science Sc2 Life processes and living things 4a-c, 5a-f

Suitable for: Year 6

When: April to October

To book a school visit to Great Dixter please email education@greatdixter.co.uk or phone Catherine on 01797 254048

Nature sculptors day*

Searching the garden for natural seed pods, plant forms and other inspiration the children will collect natural objects and make a simple design. Using this they will create a Dexter inspired plaque using plaster of Paris, and found materials from the garden. With plenty of scope for imagination, discussion and experiment, this session is the perfect way to creatively explore Great Dexter.

This session can also take the form of a group activity, setting found objects from the garden into plaster of Paris to create a group plaque. Please ask for more details.



National Curriculum:

Art and Design 1a-c, 2a-c, 3a-b, 4a-b

English 1c-f, 2 a-f, 3, a-e, 10 a-c

Design and Technology 1b,d, 2a-e, 3a

Suitable for: Year 2 and above

Time: Any time of year

To book a school visit to Great Dixter please email education@greatdixter.co.uk or phone Catherine on 01797 254048

SCHOOL VISITS TO GREAT DIXTER

Great Dixter has an exciting new programme for schools which will be available from Spring 2012.



All primary school visits to Great Dixter cost £5.50 per child, which includes a full day of planned activity with the Education Officer, Catherine as well as use of the education room at Dixter Farm for lunch and as part of planned activities. As the garden is small a maximum of one class may visit in a day. Accompanying adults are free of charge.



Where you see * workshops will be run by Hastings artist Hazel Brook. <http://www.graphicideas.co.uk/index.htm> . As well as being a visual artist, a painter and printmaker, Hazel also works in a range of mixed media including collage and drawing. She has lots of experience working with children, having worked in a Hastings nursery setting running art workshops as well as running educational programmes for children in museums and galleries.

To book a visit or discuss your group's needs with the Education Officer, please email education@greatdixter.co.uk or phone 01797 254048.

A programme of activities for Early Years Foundation Stage to Key Stage 2 is currently available. For Key stage 3 and above please contact the Education Officer who will tailor your visit.

To book a school visit to Great Dixter please email education@greatdixter.co.uk or phone Catherine on 01797 254048

Programme
Early Years Foundation Stage to Key Stage 1.

Plant explorers

This session will help Foundation and Key stage 1 groups to explore Great Dixter. The children will learn about the parts of a plant, how we can help plants to grow and about plants in the local environment, focussing on the use of senses. "Plant Explorers" includes an activity walk around the garden, a seed planting session- and a seasonal cooking activity where the children will be able to prepare a simple snack using fruit or vegetables grown in the teaching garden. This will introduce healthy eating concepts and help children to identify where their food comes from.



National curriculum:

Science Sc1 (Scientific enquiry): 2f, 2h. Science Sc2 (Life processes and living things): 1a, 1c, 3a-c. Design and Technology 1a-c, 2a-f, 3a-b, 4a.

Suitable for: EYFS and Year 1

When: Spring-Autumn

Sensory discoverers

This session will encourage children to make full use of their senses in exploring the garden and woodland at Great Dixter. The group will take part in a variety of activities focussing on use of the senses with loads of fun and games, stories and a special view of the garden and woodland at Great Dixter.



National Curriculum:

Science: SC1 2f,h, Exploring using senses English En1: 8C Describing events and experience. Geography 4a, b

Suitable for: EYFS and Year 1

When: Any time of year

To book a school visit to Great Dixter please email education@greatdixter.co.uk or phone Catherine on 01797 254048

Woodland explorer day

Our woodland explorer day will introduce children to Great Dixter's ancient coppiced woodland through a range of different practical activities. The group will find out about firelighting, use small hand tools to create a name badge, have a chance to cook over the fire and play a whole range of sensory games.

The afternoon will consist of a shelter building session, introduced by a story to get imaginations fired up, plus some time for the children to explore the woods undirected.

(Can be carried out building mini or full-sized shelters depending on the abilities of your group)



National curriculum:

Design & Technology 1a-d, 2a-e, 3a-c, 4a,b, 5b

English 2a,b, 3a,b

PSHE 1a-c

Citizenship 1a-c

Suitable for: EYFS- Key stage 1

When: Any time of year

Nature sculptors day*

Searching the garden for natural seed pods, plant forms and other inspiration the children will collect natural objects and make a simple design. Using this they will create a Dexter inspired plaque using plaster of Paris, and found materials from the garden. With plenty of scope for imagination, discussion and experiment, this session is the perfect way to creatively explore Great Dexter.

This session can also take the form of a group activity, setting found objects from the garden into plaster of Paris to create a group plaque. Please ask for more details.



National Curriculum:

Art and Design, 1a-b, 2a-c, 3a-b 4a-c

English, Speaking 1c-f, Listening, 2 a-f, Group Discussion, 3, a-e, 10 a-c

Design and Technology, Developing and communicating ideas, 1a-e, Working with tools and equipment, 2 a-e, Evaluating work, 3a,b, Knowledge and understanding, 4a

Suitable for: Year 2 and above

When: Any time of year

(Please note that Hazel has the experience to plan art workshops for younger children. Please contact us for a tailor made session).

Environment investigators

This session is aimed at helping Key stage 1 pupils investigate plants and animals in the local environment. Using the rich and diverse landscapes available at Great Dixter including our ancient coppiced woodland, dipping pond and rich biodiverse meadow, this hands-on session will enable children to describe, identify, group and compare different habitats and their inhabitants. This session includes an activity walk and plenty of fun and games!



National Curriculum:

Science Sc1 (Scientific enquiry) 2f, 2h. Science Sc2 (Life processes and living things) 1a, 1c, 3a-c

Suitable for: EYFS and Key stage 1

Garden collage and print day*

The day will start with a session sketching around the garden, looking closely at insects, plant forms and birds as well as collecting other information including colours shapes, forms, movement, scale, textures scents and smells, as well as words and ideas from the garden. The group will return to the education centre where they will use the information collected from the garden to create insects, birds and plant designs on card. The children will be encouraged to cut and rearrange the card cut-outs and use natural objects to add to the piece creating a printing block. They will then use their printing block to experiment by creating prints and rubbings on a range of materials using Brusho dyes and crayons.



National Curriculum:

Art and Design, 1a-b, 2a-c, 3a-b, 4a-c

English, 2 a-f, 3, a-e, 10 a-c

Design and Technology, 1a-e, 2 a-e, 3a,b, 4a

Suitable for: Year 2 and above

When: Any time of year

(Please note that Hazel has the experience to plan art workshops for younger children. Please contact us for a tailor made session)